

TR Series Regulator

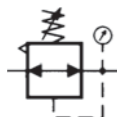


● TR3000-03



● TR5000-10

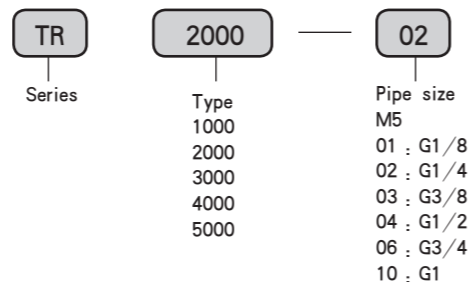
■ Graphics Sign



● Air Regulator

It adopts balanced inlet with relief device. It has the advantages of stable pressure, high precision, quick reaction and firm lockup. It can be freely combined with other air-source treatment products.

● Ordering Code

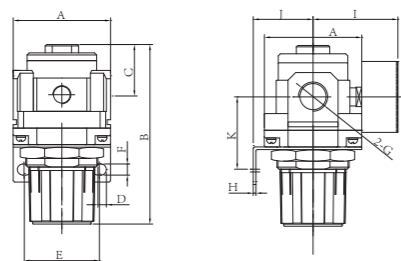


■ Technical Parameter

Specification	TR1000-M5	TR2000-02/01	TR3000-03/02	TR4000-04/03	TR4000-06	TR5000-10/06
Applicable Medium	Air					
Rating Flow(L/min)	100	550	2500	6000	6000	8000
Applicable Pressure Range	0.05 ~ 0.7MPa	0.05 ~ 0.85MPa				
Medium Temperature	0 ~ 60°C					
Type of Valve	Relief Type					
Gauge Port Size	G1/16	G1/8		G1/4		

■ Figure Dimension

- TR1000-M5 TR2000-02/01 TR3000-03/02 TR4000-04/03 TR4000-06 TR5000-10/06



1.C: M5 3H6, Max Thickness: 3.5
 1.C: M5 3H6, Max Thickness: 5

Type	A	B	C	D	E	F	G	H	I	J	K	P
TR1000-M5	25	61	11	6.5	28	4.5	M5	2	26	25	30	20.5
TR2000-02/01	40	82	17	15	34	5.5	G1/4	2.3	50	31	43	33.5
TR3000-03/02	53	117	35	8	40	6.5	G3/8	2.3	56	48	50	42.5
TR4000-04/03	70	140	37	10.5	54	8.5	G1/2	2.3	61	48	54	51
TR4000-06	76	144	37	10.5	54	8.5	G3/4	2.3	70	48	54	51
TR5000-10/06	90	160	45	11	54	11	G1	3.2	71.5	48	60	51

TW Series Filter Regulator-Basic

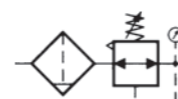


● TW2000-02



● TW4000-04

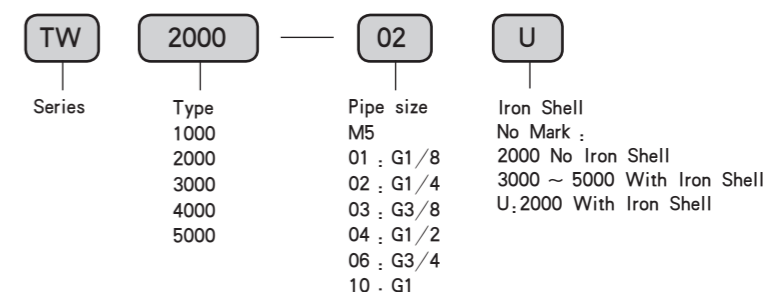
● Ordering Code



● Character

It is designed with integration of filter and regulator, with small dimension and reasonable structure. It can not only provide clean and dry air for pneumatic system, but also ensure the steady pressure of the air source.

● Ordering Code

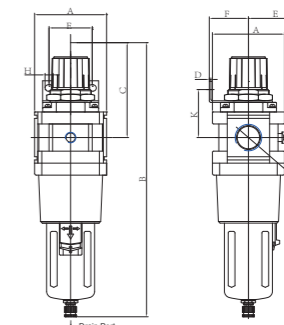
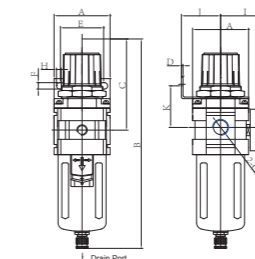
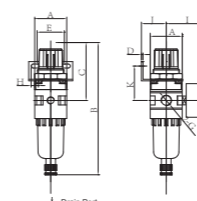


■ Technical Parameter

Specification	TW1000-M5	TW2000-02/01	TW3000-03/02	TW4000-04/03	TW4000-06	TW5000-10/06
Applicable Medium	Air					
Rating Flow(L/min)	100	550	2000	4000	4000	5000
Filtration	5 μm ~ 40 μm					
Applicable Pressure Range	0.05 ~ 0.7MPa	0.05 ~ 0.85MPa				
Medium Temperature	0 ~ 60°C					
Type of Valve	Relief Type					
Gauge Port Size	G1/16	G1/8		G1/4		

■ Figure Dimension

- TW1000-M5 TW2000-02/01 ● TW3000-03/02 TW4000-04/03 TW4000-06 ● TW5000-10/06



Type	A	B	C	D	E	F	G	H	I	J	K	N
TW1000-M5	25	115	50	2.0	28	4.5	M5	6.5	26	25	30	20.5
TW2000-02/01	40	188	72.5	2.0	34	5.5	G1/4	15	53	31	43	41.5
TW3000-03/02	53	216	89	2.0	40	6.5	G3/8	8	56	48	50	42.5
TW4000-04/03	70	260	114	2.0	54	8.5	G1/2	10.5	62	48	54	52.5
TW4000-06	75	260	114	2.0	54	8.5	G3/4	10.5	62	48	54	52.5
TW5000-10/06	90	335	118	3.0	54	8.5	G1	11	78	48	60	52.5

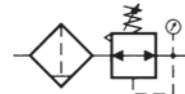
TW Series Filter Regulator—Automatic drain type



● TW2000-02D

● TW4000-04D

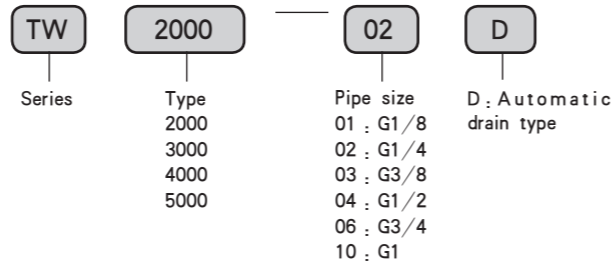
■ Graphics Sign



● Character

Standard auto drain design, compact structure, convenient assembling. It can clear the water in cup without manually

● Ordering Code



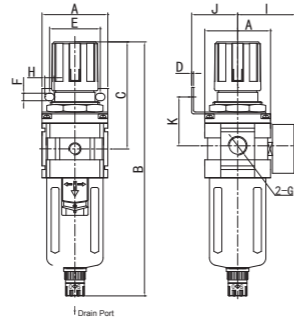
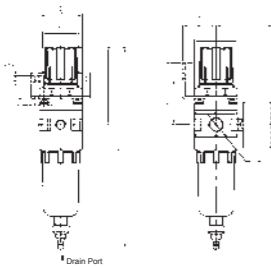
■ Technical Parameter

Specification	TW2000-02D/01D	TW3000-03D/02D	TW4000-04D/03D	TW4000-06D	TW5000-10D/06D
Applicable Medium	Air				
Rating Flow(L/min)	550	2000	4000	4000	5000
Filtration	5 μm ~ 40 μm				
Applicable Pressure Range	0.15 ~ 0.85MPa				
Medium Temperature	0 ~ 60°C				
Type of Valve	Relief Type				
Gauge Port Size	G1/8		G1/4		

■ Figure Dimension

● TW2000-02D/01D

● TW3000-03D/02D TW4000-04D/03D TW4000-06D



○ Max Thickness:3.5
 ○ Max Thickness:5

Type	A	B	C	D	E	F	G	H	I	J	K	N
TW2000-02D/01D	40	205	72.5	2.0	34	5.5	G1/4	15	53	31	43	41.5
TW3000-03D/02D	53	241	89	2.0	40	6.5	G3/8	8	56	48	50	42.5
TW4000-04D/03D	70	292	114	2.0	54	8.5	G1/2	10.5	62	48	54	52.5
TW4000-06D	75	292	114	2.0	54	8.5	G3/4	10.5	62	48	54	52.5
TW5000-10D/06D	90	370	118	3.0	54	8.5	G1	11	78	48	60	52.5

TW Series Filter Regulator—Metal Cup Type



● TW2000-02M
● TW2000-02DM

● TW4000-04M
● TW4000-04DM

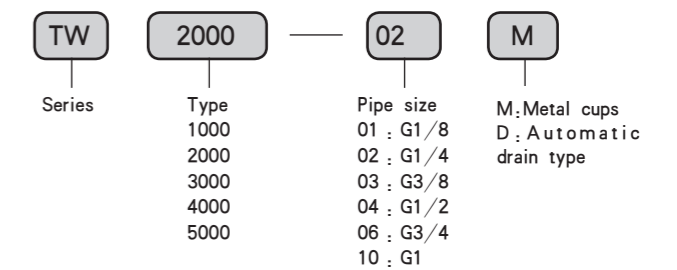
■ Graphics Sign



● Character

Metal cup is of metal material die-casting forming. It's reliable, durable ability and anti-explosion. Besides, it has long use life and safe use.

● Ordering Code



■ Technical Parameter

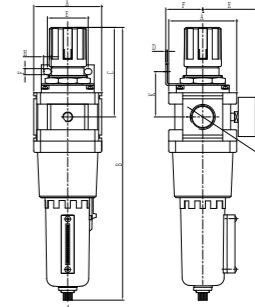
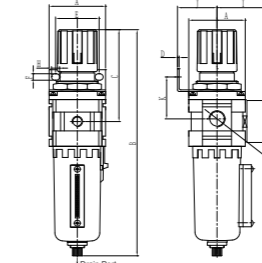
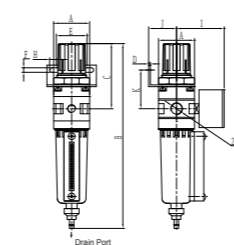
Specification	TW2000-02M/02DM/01M/01DM	TW3000-03M/03DM/02M/02DM	TW4000-04M/04DM/03M/03DM	TW4000-06M/06DM	TW5000-10M/10DM/06M/06DM
Applicable Medium	Air				
Rating Flow(L/min)	550	2000	4000	4000	5000
Filtration	5 μm ~ 40 μm				
Applicable Pressure Range	0.05 ~ 0.85MPa				
Medium Temperature	0 ~ 60°C				
Type of Valve	Relief Type				
Gauge Port Size	G1/8		G1/4		

■ Figure Dimension

● TW2000-02M/01M

● TW3000-03M/02M TW4000-04M/03M TW4000-06M

● TW5000-10M/06M



○ TW2000-3000: Max Thickness:3.5
 ○ TW4000-5000: Max Thickness:5

Type	A	B	C	D	E	F	G	H	I	J	K	N	Automatic drain B
TW2000-02M/02DM/01M/01DM	40	205	72.5	2.0	34	5.5	G1/4	15	53	31	43	41.5	188
TW3000-03M/03DM/02M/02DM	53	276	89	2.0	54	6.5	G3/8	8	56	48	50	42.5	241
TW4000-04M/04DM/03M/03DM	70	277	114	2.0	54	8.5	G1/2	10.5	62	48	54	52.5	292
TW4000-06M/06DM	75	277	114	2.0	54	8.5	G3/4	10.5	62	48	54	52.5	292
TW5000-10M/10DM/06M/06DM	90	355	118	3.0	54	8.5	G1	11	78	48	60	52.5	370