

TR Series Regulator

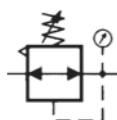


● TR3000-03



● TR5000-10

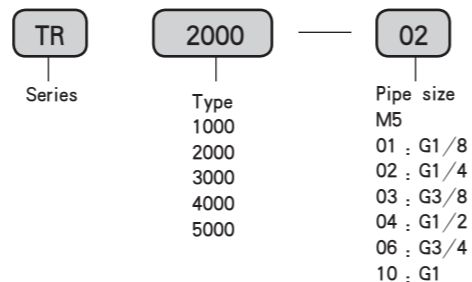
■ Graphics Sign



● Air Regulator

It adopts balanced inlet with relief device. It has the advantages of stable pressure, high precision, quick reaction and firm lockup. It can be freely combined with other air-source treatment products.

● Ordering Code

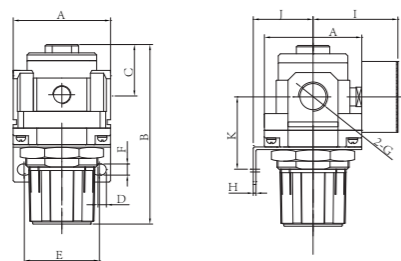


■ Technical Parameter

Specification	TR1000-M5	TR2000-02/01	TR3000-03/02	TR4000-04/03	TR4000-06	TR5000-10/06
Applicable Medium	Air					
Rating Flow(L/min)	100	550	2500	6000	6000	8000
Applicable Pressure Range	0.05 ~ 0.7MPa	0.05 ~ 0.85MPa				
Medium Temperature	0 ~ 60°C					
Type of Valve	Relief Type					
Gauge Port Size	G1/16	G1/8		G1/4		

■ Figure Dimension

- TR1000-M5
- TR2000-02/01
- TR3000-03/02
- TR4000-04/03
- TR4000-06
- TR5000-10/06



1 C: M5 3#C, Max Thickness: 3.5
1 C: M5 4#C, Max Thickness: 5

Type	A	B	C	D	E	F	G	H	I	J	K	P
TR1000-M5	25	61	11	6.5	28	4.5	M5	2	26	25	30	20.5
TR2000-02/01	40	82	17	15	34	5.5	G1/4	2.3	50	31	43	33.5
TR3000-03/02	53	117	35	8	40	6.5	G3/8	2.3	56	48	50	42.5
TR4000-04/03	70	140	37	10.5	54	8.5	G1/2	2.3	61	48	54	51
TR4000-06	76	144	37	10.5	54	8.5	G3/4	2.3	70	48	54	51
TR5000-10/06	90	160	45	11	54	11	G1	3.2	71.5	48	60	51

TW Series Filter Regulator-Basic

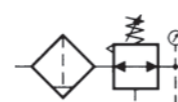


● TW2000-02



● TW4000-04

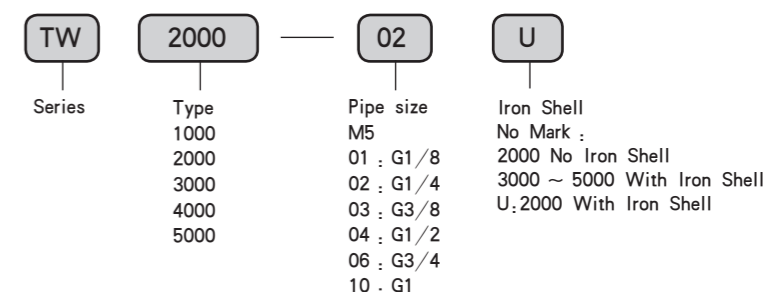
● Ordering Code



● Character

It is designed with integration of filter and regulator, with small dimension and reasonable structure. It can not only provide clean and dry air for pneumatic system, but also ensure the steady pressure of the air source.

● Ordering Code

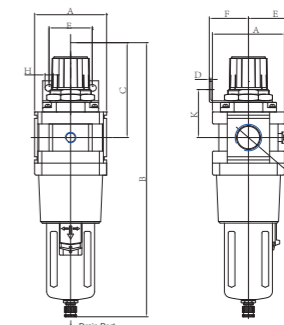
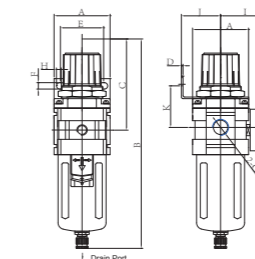
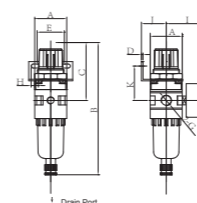


■ Technical Parameter

Specification	TW1000-M5	TW2000-02/01	TW3000-03/02	TW4000-04/03	TW4000-06	TW5000-10/06
Applicable Medium	Air					
Rating Flow(L/min)	100	550	2000	4000	4000	5000
Filtration	5 μm ~ 40 μm					
Applicable Pressure Range	0.05 ~ 0.7MPa	0.05 ~ 0.85MPa				
Medium Temperature	0 ~ 60°C					
Type of Valve	Relief Type					
Gauge Port Size	G1/16	G1/8		G1/4		

■ Figure Dimension

- TW1000-M5
- TW2000-02/01
- TW3000-03/02
- TW4000-04/03
- TW4000-06
- TW5000-10/06



Type	A	B	C	D	E	F	G	H	I	J	K	N
TW1000-M5	25	115	50	2.0	28	4.5	M5	6.5	26	25	30	20.5
TW2000-02/01	40	188	72.5	2.0	34	5.5	G1/4	15	53	31	43	41.5
TW3000-03/02	53	216	89	2.0	40	6.5	G3/8	8	56	48	50	42.5
TW4000-04/03	70	260	114	2.0	54	8.5	G1/2	10.5	62	48	54	52.5
TW4000-06	75	260	114	2.0	54	8.5	G3/4	10.5	62	48	54	52.5
TW5000-10/06	90	335	118	3.0	54	8.5	G1	11	78	48	60	52.5