

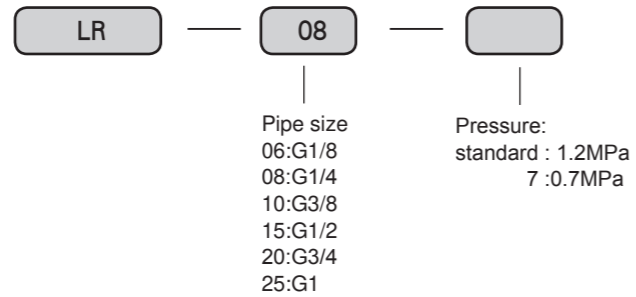
LR Series Regulator



Character

Even if the input pressure and compressed air consumption make system fluctuation, regulator can ensure its working pressure very stable. If there is no air consumption, automatic exhaust of the regulator can also make system working pressure stable.

Ordering Code



Graphics Sign

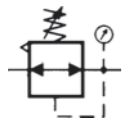
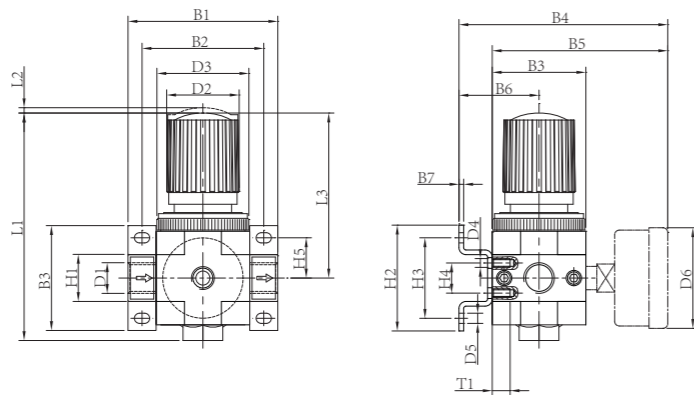


Figure Dimension



Type	B1	B2	B3	B4	B5	D1	D2	D3	D4	D6	H1	H4	L1	L3	L4
LR-06	64	52	40	96	77	G1/8	31	M36×1.5	M4	39	20	11	197	69	3
LR-08	64	52	40	96	77	G1/4	31	M36×1.5	M4	39	20	11	97	69	3
LR-10	70	70	55	113	94	G3/8	50	M52×1.5	M5	50	32	22	132.5	98	5
LR-15	85	70	55	113	94	G1/2	50	M52×1.5	M5	50	32	22	132.5	98	5
LR-20	96	80	66	126	105	G3/4	49	M52×1.5	M5	50	32	22	145	105	5
LR-25	136	91	66	126	105	G1	49	M52×1.5	M5	50	40	22	145	105	5

LR Series Regulator

Technical Parameter

Order	Type						
Regulator	Working pressure 1.2MPa	LR-06	LR-08	LR-10	LR-15	LR-20	LR-25
	Working pressure 0.7MPa	LR-06-7	LR-08-7	LR-10-7	LR-15-7	LR-20-7	LR-25-7
Pressure gauge	use for 0 ~ 1.2MPa FR.L	Y40-16-1/8			Y50-16-1/4		
	use for 0 ~ 0.7MPa FR.L	Y40-10-1/8			Y50-10-1/4		
Applicable Medium	Air						
Structural features	Diaphragm valve						
Connection size		G1/8	G1/4	G3/8	G1/2	G3/4	G1
	Standard rated flow	LR-...-...	800	1500	3200	3500	3800
	LR-...-7...	1000	1200	3300	4000	5000	5200
Input pressure	0.1 ~ 1.6MPa						
Working pressure	0.05 ~ 1.2MPa/0.05 ~ 0.7MPa						
Medium Temperature	-10 ~ +60°C						

