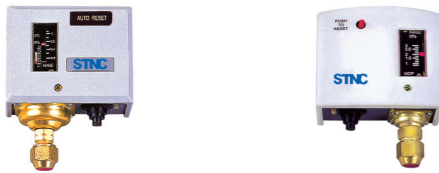


HLP Series Pressure Controller



- HLP110
- HLP506
- HLP506M
- HLP530M

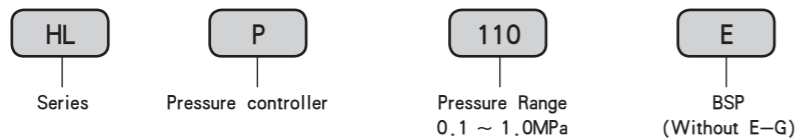
● Character

It is applied to the refrigerant not only using hydrogen fluoride as medium, But also using air and liquid (allowable liquid temperature: -45~+110 c). The novel micro switch structure will ensure reliable transform function. The smart installation plate is applicable to different places.

Slight Moving Switch' s Date

Specified Electric CurrentA	Specified VoltageV	
	A . C . 125	A . C . 250
Disguide Electric Cureent	48	12
Maximum Load	48	12
Winking Electric Current	288	72

● Ordering Code



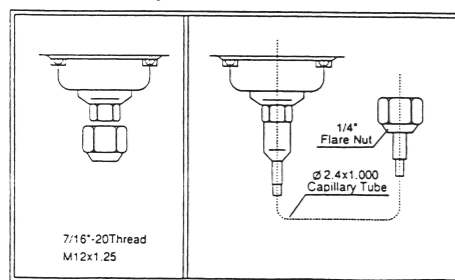
Single Series (MPa)

Type	Regulator Limits		Switch Voltage Disparity		Setting Up Of Leaving The Factory	
	Min	Max	Min	Max	Cut-off[Link-up]	Link-up[Cut-off]
HLP110	0.1	1	0.1	0.3	0.6	0.5
HLP506	-0.07	0.6	0.06	0.4	0.3	0.2
HLP506M	-0.07	0.6	Fixed 0.3 to 0.5 ≤ 0.4		0.3	Manual Restoration
HLP530	0.5	3	Fixed 0.3 to 0.5		2	1.5
HLP530D	0.5	3	0.5	1	2	1.5
HLP530M	0.5	3	Fixed 0.3 to 0.5 ≤ 0.4		2	Manual Restoration

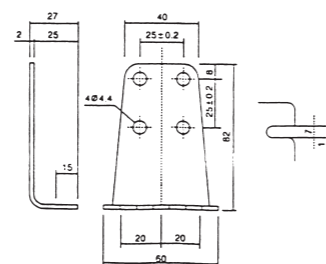
● Way of connection and installation

- Way of connection: Way of connection of controller: (1) use 6x1 copper tube (It should be soft state), and then screw tight with controller' s screw cap in the tube 90 cape trumpet. (2) connect with 1meter-long 3 capillary (It should be required when ordering.)(See figure below).
- Way of installation: Way of installation of controller: (1) install with four M4 installation bore in the back of controller. (2) choose to use allpurpose installation board attachment.(See figure below).

Way of connection



Standard Made to order



Installation size fo attachments

HLP Series Pressure Controller



- HLP830HLM
- HLP830M

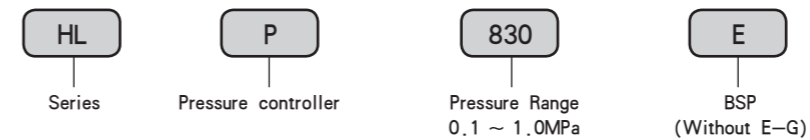
● Character

It is applied to the refrigerant not only using hydrogen fluoride as medium, But also using air and liquid (allowable liquid temperature: -45~+110 c). The novel micro switch structure will ensure reliable transform function. The smart installation plate is applicable to different places.

Slight Moving Switch' s Date

Specified Electric CurrentA	Specified VoltageV	
	A . C . 125	A . C . 250
Disguide Electric Cureent	48	12
Maximum Load	48	12
Winking Electric Current	288	72

● Ordering Code



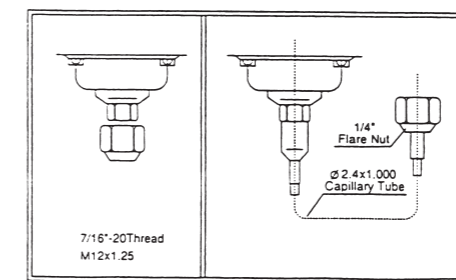
Single Series (MPa)

Type		Regulator Limits		Switch Voltage Disparity		Setting Up Of Leaving The Factory	
		Min	Max	Min	Max	Cut-off[Link-up]	Link-up[Cut-off]
HLP830	low voltage end	-0.07	0.6	0.06	0.4	0.3	0.2
	high voltage end	0.5	3	Fixed 0.3 to 0.5		2	1.5
HLP830HLM	low voltage end	-0.07	0.6	Fixed 0.3 to 0.5 ≤ 0.2		0.3	Manual Restoration
	high voltage end	0.5	3	Fixed 0.3 to 0.5 ≤ 0.4		2	Manual Restoration
HLP830HM	low voltage end	-0.07	0.6	0.06	0.4	0.3	0.2
	high voltage end	0.5	3	Fixed 0.3 to 0.5 ≤ 0.4		2	Manual Restoration
HLP830M	low voltage end	-0.07	0.6	0.06	0.4	0.3	0.2
	high voltage end	0.5	3	Fixed 0.3 to 0.5 ≤ 0.4		2	Manual Restoration

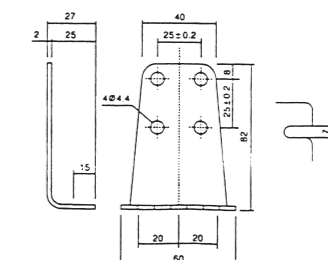
● Way of connection and installation

- Way of connection: Way of connection of controller: (1) use 6x1 copper tube (It should be soft state), and then screw tight with controller' s screw cap in the tube 90 cape trumpet. (2) connect with 1meter-long 3 capillary (It should be required when ordering.)(See figure below).
- Way of installation: Way of installation of controller: (1) install with four M4 installation bore in the back of controller. (2) choose to use allpurpose installation board attachment.(See figure below).

Way of connection



Standard Made to order



Installation size fo attachments