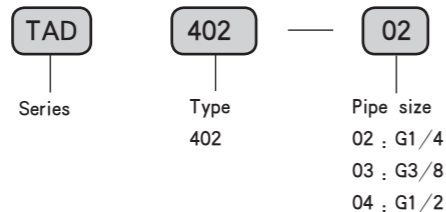


Auto Drain Valve



Ordering Code



- TAD402-02
- TAD402-03
- TAD402-04

Applications

The special design of the TAD Series can eliminate the liquid water and oil collect in the lower chamber of air compressor, separator, air dryer, air filter, drop leg, etc. It can be installed in any position which is not convenient for manual drain, or needs more compressed air and more time of drain.

Technical Parameter

Specification	TAD402-02	TAD402-03	TAD402-04
Proof Pressure	1.5MPa		
Applicable Pressure	0.15 ~ 1.0MPa		
Medium Temperature	0 ~ 60°C		
Outfall Size	G1/4	G3/8	G1/2
Applicable Medium	Air		

Graphics Sign



Operation Principle

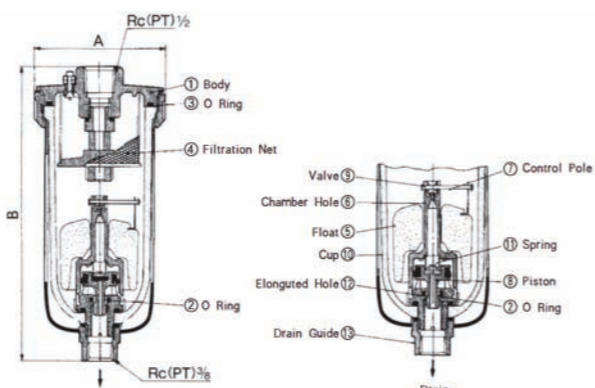
When no pressure is applied internally to case, float ⑤ descends of its own weight and valve ③ closes chamber hole ⑥. Piston ⑧ is pushed down by spring ⑪, and the drainage passes through the chamber's elongated hole ⑫ to be discharged.

When pressure is applied internally to the case:

When pressure is greater than 0.1MPa, it overcomes the force of spring ⑪, allowing piston ⑧ to ascend, and the chamber's elongated hole is closed. Thus, the inside of case is isolated from the outside. When drainage has accumulated:

Float ⑤ ascends due to flotation and opens the chamber hole ⑥, allowing the pressure to enter the chamber hole ⑥. Piston ⑧ descends due to the force of the internal pressure and spring ⑪, and the accumulated drainage is discharged through drain guide ⑬.

Figure Dimension



Type	TAD402-02	TAD402-03	TAD402-04
A	φ82	φ82	φ82
B	182	182	182

ZDFS Auto Drain Valve

It is installed in the bottom of auto drain, air filter and filter regulator. It can automatically eliminate condensate collect in lower chamber. Notice: Installed vertically and outfall downward.



● TAD-ZDFS



● TF2000-ZDFS



● TF3000-ZDFS
● TF4000-ZDFS

TIR precise regulator

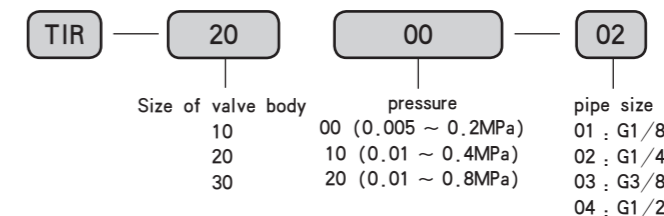


● TIR1000-01 ● TIR2000-01

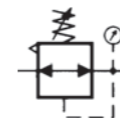
Character

Small size and light weight, large output flow and precise pressure, easy to install, can be mounted independently with bracket or mounted directly with TF, the modular filtering combination.

Ordering Code



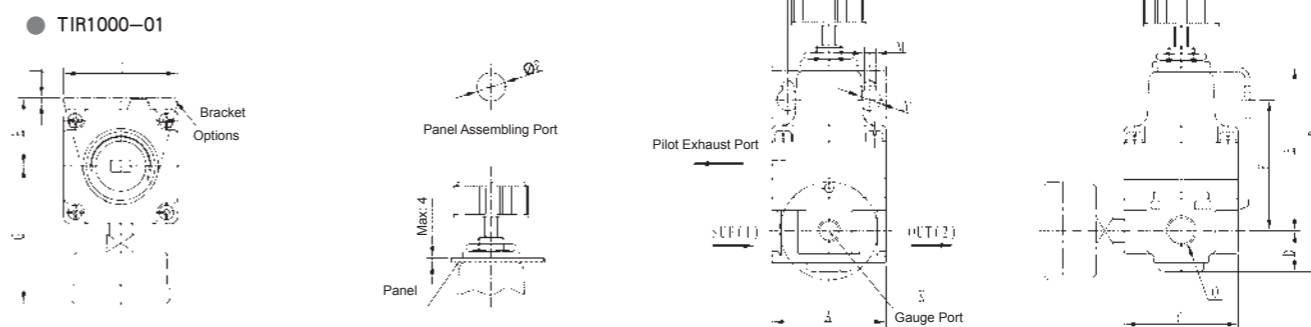
Graphics Sign



Technical Parameter

Specification	TIR1000-01	TIR1010-01	TIR1020-01	TIR2000-02	TIR2010-02	TIR2020-02	TIR3000-03/04	TIR3010-03/04	TIR3020-03/04
Applicable pressure range	0.005 ~ 0.2	0.01 ~ 0.4	0.01 ~ 0.8	0.005 ~ 0.2	0.01 ~ 0.4	0.01 ~ 0.8	0.01 ~ 0.2	0.01 ~ 0.4	0.01 ~ 0.8
Outfall Size	G1/8			G1/4			G3/8, G1/2		
Air consumption (below 1.0MPa)	Max 3.5L/min			Max 3.1L/min			Max 9.5L/min outlet : Max2L/min		
Minimum applicable pressure MPa	Setting pressure +0.05			Setting pressure +0.05			Setting pressure +0.05		
Proof Pressure	1.0MPa								
Sensitivity	Sensitivity: ≤ 0.2%								
Repeat accuracy	Repeat accuracy : ±0.5%								
Medium Temperature	-5 ~ +60								
Gauge Port Size	G1/8								

Figure Dimension



Type	A	B	C	D	E	F	G	H	I	J	K	L	M	N	O	P
TIR1000-01	35	90	35	10	51	44	43	25	42	2	G1/8	28	4.5	φ8.5	G1/8	φ10.5
TIR1010-01	35	90	35	10	51	44	43	25	42	2	G1/8	28	4.5	φ8.5	G1/8	φ10.5
TIR1020-01	35	90	35	10	51	44	43	25	42	2	G1/8	28	4.5	φ8.5	G1/8	φ10.5
TIR2000-02	50	123	50	18	71	63	60	30	50	2	G1/8	36	5.5	φ9.5	G1/4	φ12.5
TIR2010-02	50	123	50	18	71	63	60	30	50	2	G1/8	36	5.5	φ9.5	G1/4	φ12.5
TIR2020-02	50	123	50	18	71	63	60	30	50	2	G1/8	36	5.5	φ9.5	G1/4	φ12.5
TIR3000-03	66	148	66	22	76	76	68	48	82	2.3	G1/8	60	9	φ15.5	G3/8 G1/2	φ12.5
TIR3010-03	66	148	66	22	76	76	68	48	82	2.3	G1/8	60	9	φ15.5		
TIR3020-03	66	148	66	22	76	76	68	48	82	2.3	G1/8	60	9	φ15.5		