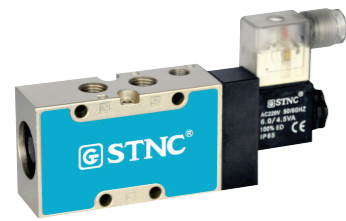


LHF Series Solenoid Valve

New



● Character

It is a pneumatic valve controlled by micro electric signal, with small dimension, large flow, handsome shape, reliable performance and long service life. It can be installed in the integration.

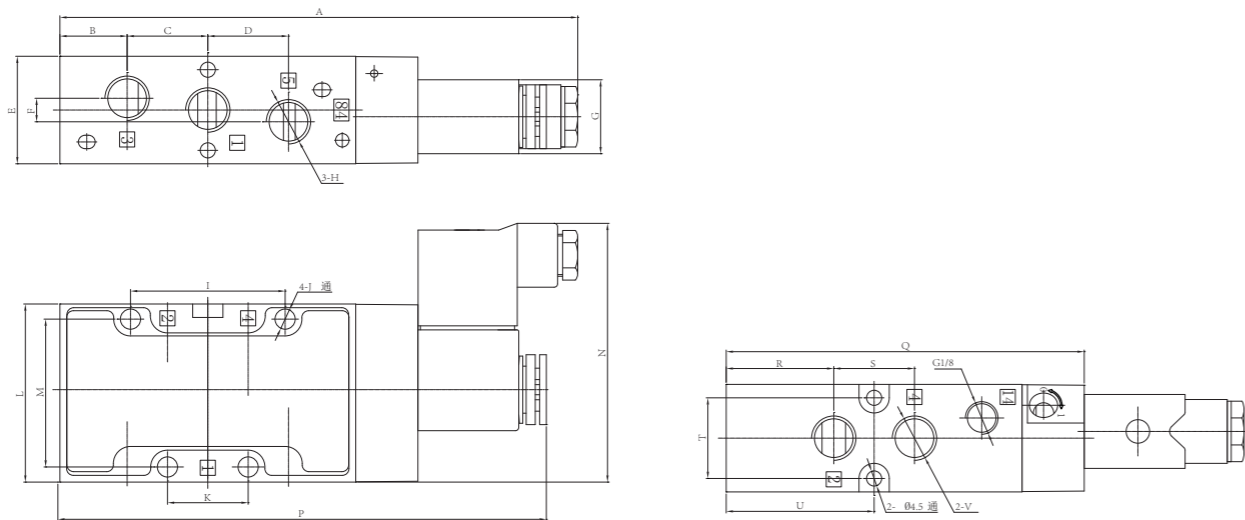
● Ordering Code



■ Technical Parameter

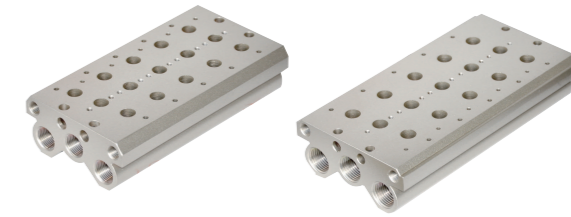
Item	Function	Pipe Size	Applicable Medium	Applicable Pressure Range	Max Action Frequency	Lubrication	Medium Temperature	Power
LHF2511-06	2 Positions/5Ports	G1/8	Air	0.25 ~ 0.8MPa	5 Cycles/Sec	Needless	-5 ~ 60°C	AC220V: 5VA DC24V: 4.8W
LHF2521-08	2 Positions/5Ports	G1/4	Air	0.25 ~ 0.8MPa	5 Cycles/Sec	Needless	-5 ~ 60°C	

■ Figure Dimension



Type	A	B	C	D	E	F	G	H	I	J	K	L	M	N	P	Q	R	S	T	U	V
LHF2511-06	143	17.5	21	21	26	7	22	G1/8	41	∅5	21	47	40	73	136	95.5	27.5	22	19.5	38.5	G1/8
LHF2521-08	155	20	24	24	32	7	22	G1/4	46	∅6	24	53	44	80	146	106.5	32	24	24	44	G1/4

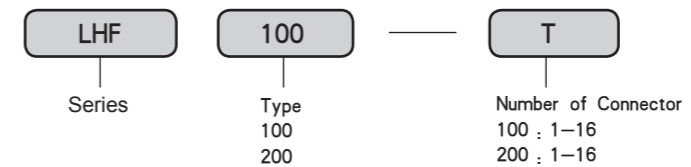
LHF Series Solenoid Valve



● LHF100

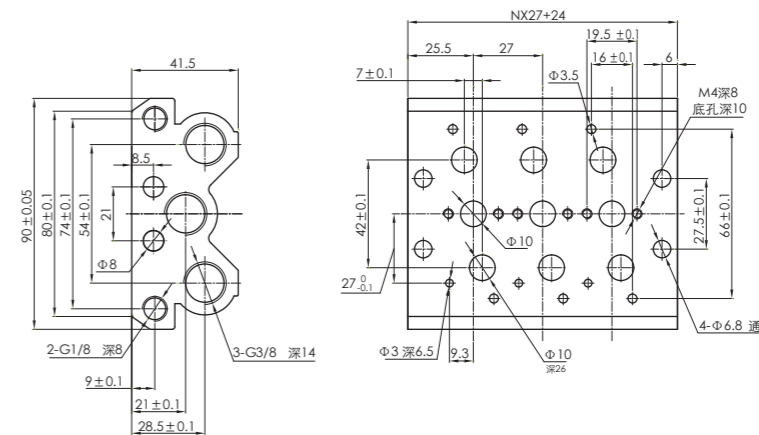
● LHF200

● Ordering Code



■ Figure Dimension

● LHF100



● LHF200

