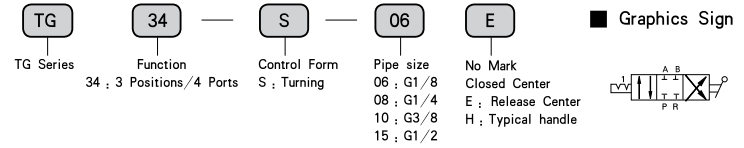




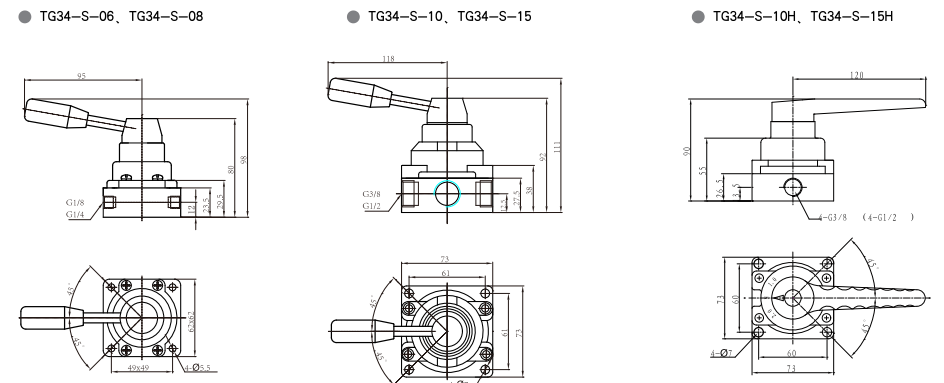
## ● Ordering Code



## ■ Technical Parameter

Item Specification	Function	Pipe size	Nominal Diameter (mm)	Applicable Medium	Applicable Pressure Range	Control Method	Lubrication	Medium Temperature
TG34-S-06	3 Positions/4 Ports	G1/8	6	Air	0 ~ 1.0MPa	Manually Control	Needless	-5 ~ 60°C
TG34-S-08		G1/4	8					
TG34-S-10		G3/8	10					
TG34-S-15		G1/2	15					
TG34-S-06E		G1/8	6					
TG34-S-08E		G1/4	8					
TG34-S-10E		G3/8	10					
TG34-S-15E		G1/2	15					
TG34-S-10H		G3/8	10					
TG34-S-15H		G1/2	15					

## ■ Figure Dimension



3 Positions/4 Ports Manually-turn Valve(Ceramic Seal)



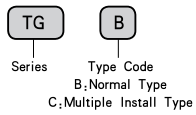
● TGB34-S-08

● TGB34-S-15

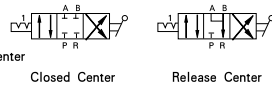
● TGC34-S-08

● TGC34-S-15

● Ordering Code



■ Graphics Sign

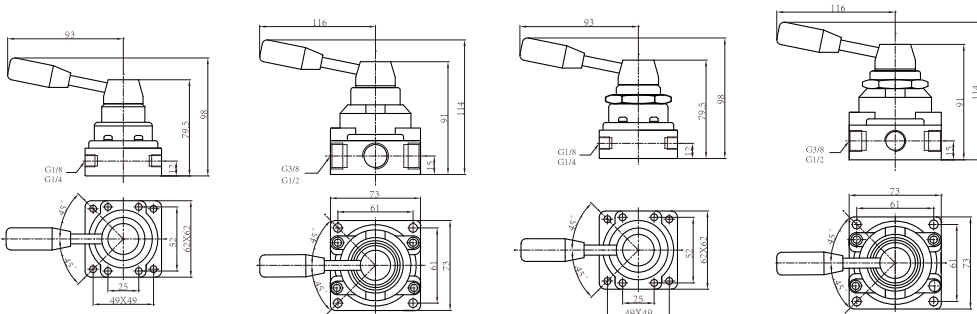


■ Technical Parameter

Item	Function	Pipe Size	Nominal Diameter (mm)	Applicable Medium	Applicable Pressure Range	Control Method	Lubrication	Medium Temperature
TGB34-S-06	3 Positions/ 4 Ports	G1/8	6	Air	0 ~ 1.0MPa	Manually Control	Needless	-5 ~ 60°C
TGB34-S-08		G1/4	8					
TGB34-S-10		G3/8	10					
TGB34-S-15		G1/2	15					
TGC34-S-06		G1/8	6					
TGC34-S-08		G1/4	8					
TGC34-S-10		G3/8	10					
TGC34-S-15		G1/2	15					

■ Figure Dimension

- TGB34-S-06 ● TGB34-S-10 ● TGC34-S-06 ● TGC34-S-10
- TGB34-S-08 ● TGB34-S-15 ● TGC34-S-08 ● TGC34-S-15



3 Positions/4 Ports Valves(Ports On The Bottom)



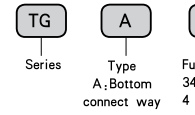
● TGA34-S-06

● TGA34-S-08

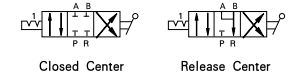
● TGA34-S-10

● TGA34-S-15

● Ordering Code



■ Graphics Sign

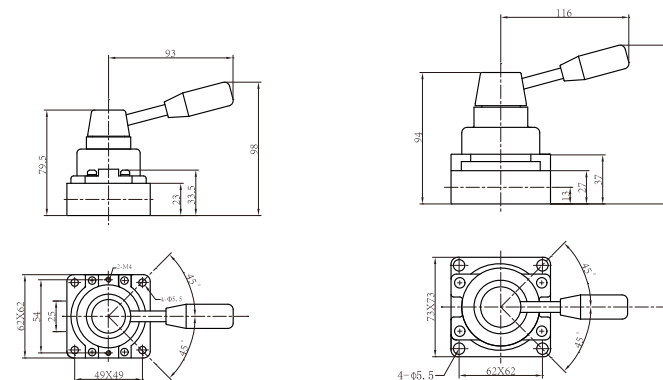


■ Technical Parameter

Item	Function	Pipe Size	Nominal Diameter (mm)	Applicable Medium	Applicable Pressure Range	Control Method	Lubrication	Medium Temperature
TGA34-S-06	3 Positions/ 4 Ports	G1/8	6	Air	0 ~ 1.0MPa	Manually Control	Needless	-5 ~ 60°C
TGA34-S-08		G1/4	8					
TGA34-S-10		G3/8	10					
TGA34-S-15		G1/2	15					
TGA34-S-06E		G1/8	6					
TGA34-S-08E		G1/4	8					
TGA34-S-10E		G3/8	10					
TGA34-S-15E		G1/2	15					

■ Figure Dimension

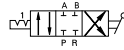
- TGA34-S-06, TGA34-S-08 ● TGA34-S-10, TGA34-S-15



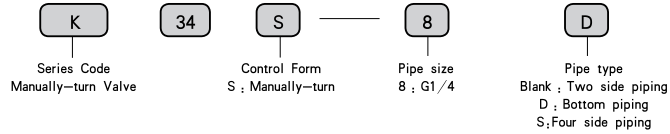
### K Series Manually-turn Valve



#### Graphics Sign



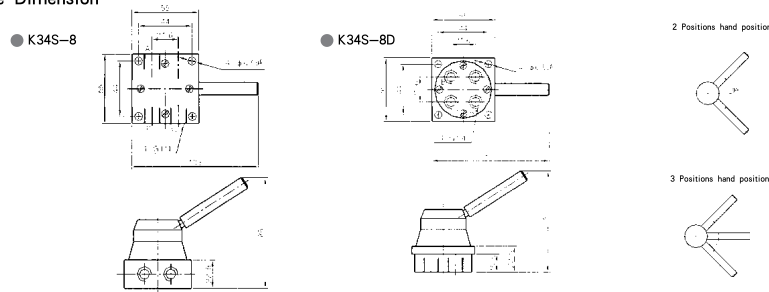
#### Ordering Code



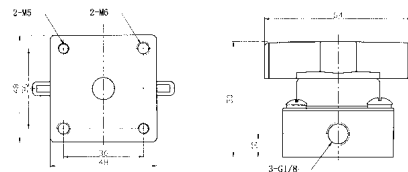
#### Technical Parameter

Item \ Specification	K23S-8	K24S-8	K34S-8	K34S-8S	K34S-8D
Pipe thread	G1/4				
Operating pressure MPa	0 ~ 1.0 MPa				
Medium Temperature	-10 ~ 60 °C				
Effective Cross Area	10				
Pipe type	Side piping				Bottom piping
Working life(M)	≥ 150 M				

#### Figure Dimension



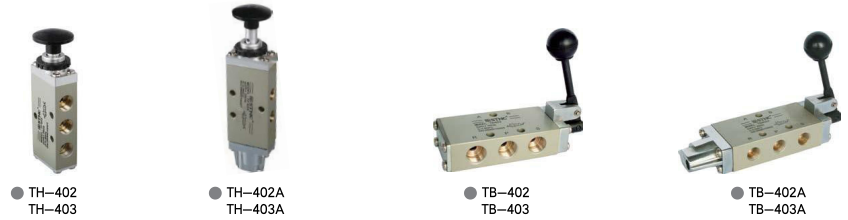
### 2 Position/3 Ports Trun Valve



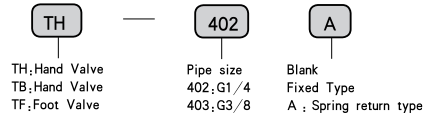
#### Technical Parameter

Item	Structure Type	Pipe Thread	Nominal Diameter (mm)	Applicable Fluid	Pressure Range	Operating Method	Lubrication	Applicable Temperature
TG23-S-06	2 Position/3 Ports	G1/8	ø2.8	Air	0 ~ 1.0MPa	Direct Action Type	Not Required	-5 ~ 60°C

### Hand Valve/Foot Valve



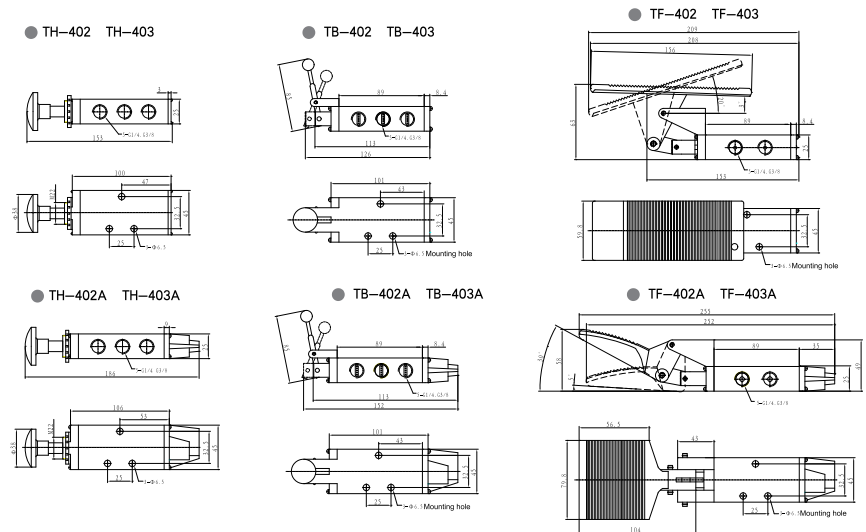
#### Ordering Code



#### Technical Parameter

Item \ Specification	TH-402/TH-403	TH-402A/TH-403A	TB-402/TB-403	TB-402A/TB-403A	TF-402/TF-403	TF-402A/TF-403A
Material of Body	Aluminum Alloy					
Control Form	Hand		Hand		Foot	
Function	2 Positions/5 Ports					
Pipe Size	G1/4, G3/8					
Applicable Fluid	Air					
Pressure Range	0 ~ 0.8MPa					
Medium Temperature	-5 ~ 60°C					

#### Figure Dimension



### TG series Hand Valve

● **Charatcer** Product design, compact, good looks, with the operating force, easy to use and so on. Pneumatic devices were widely used in control devices.

● **Ordering Code**

<b>TG</b>	<b>25</b>	<b>2</b>	<b>1B</b>	<b>06</b>	<b>C</b>	<b>M</b>
Series	Function	Connection Code	Control Form	Pipe Size	Working Mode	Working Mode
	23 : 2 Positions/3Ports 25 : 2 Positions/5Ports 35 : 3 Positions/5Ports	1 : 1/8 2 : 1/4 3 : 3/8 4 : 1/2	Hand Lever	06 : G1/8 08 : G1/4 10 : G3/8 15 : G1/2	No Mark ; 2 Positions C : 3 Positions Closed Center E : 3 Positions Release Center	No Mark ; Normal Type M : Multiple location installation

■ **Technical Parameter**

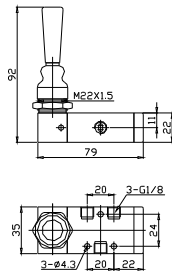
Item	Function	Pipe Size	Nominal Diameter (mm)	Applicable Medium	Applicable Pressure Range	Operating Method	Lubrication	Medium Temperature
TG231B-06	2 Positions/3 Ports	G1/8	6	Air	0 ~ 1.0MPa	Manually Control	Needless	-5 ~ 60°C
TG2321B-08		G1/4	8					
TG2511B-06	2 Positions/5 Ports	G1/8	8					
TG2521B-08		G1/4	8					
TG2521B-08M		G1/4	8					
TG2531B-10		G3/8	10					
TG2541B-15		G1/2	15					
TG3521B-08C	3 Positions/5 Ports	G1/4	8					
TG3531B-10C		G3/8	10					
TG3541B-15C		G1/2	15					

■ **Figure Dimension**

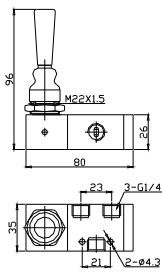
2 Positions/3 Ports Hand Valve



● TG2311B-06



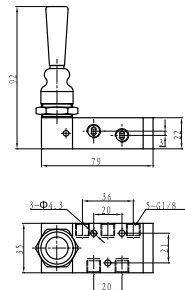
● TG2321B-08



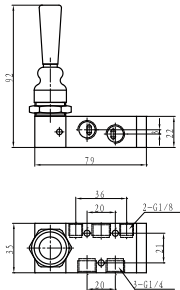
2 Positions/5 Ports Hand Valve



● TG2511B-06



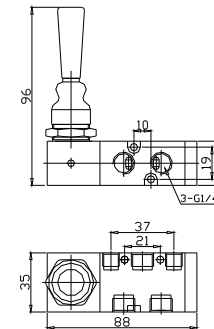
● TG2521B-08



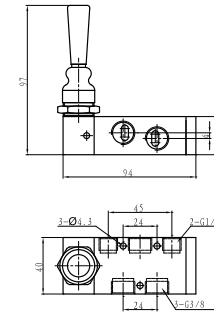
2 Positions/5 Ports Hand Valve



● TG2521B-08M



● TG2531B-10



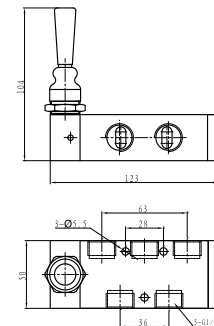
2 Positions/5 Ports Hand Valve



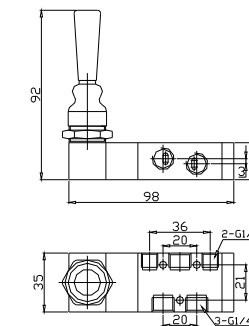
3 Positions/5 Ports Hand Valve



● TG2541B-15



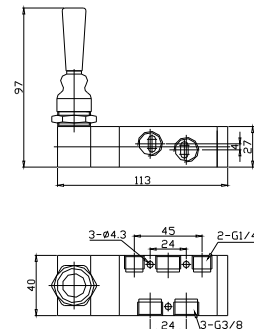
● TG3521B-08C



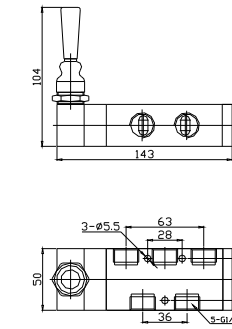
3 Positions/5 Ports Hand Valve



● TG3531B-10C



● TG3541B-15C



TG series hand valve

● **Character** Product design, compact, good looks, with the operating force, easy to use and so on. Pneumatic devices were widely used in control devices.

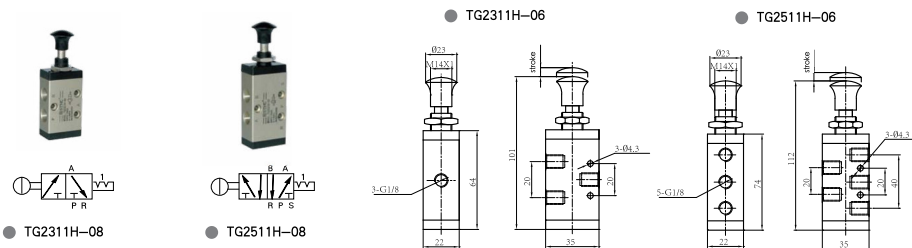
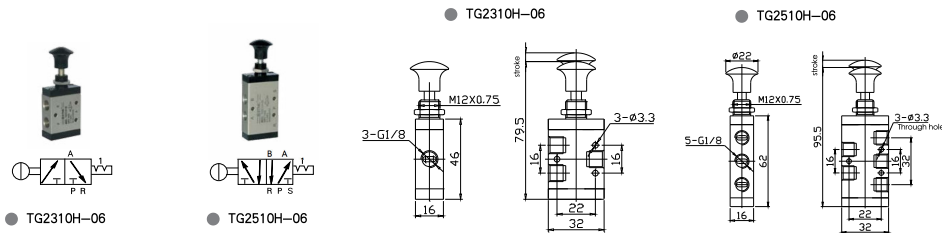
● **Ordering Code**

<b>TG</b>	<b>25</b>	<b>2</b>	<b>1H</b>	<b>06</b>
Series	Function	Connection Code	Control Form	Pipe size
	23 : 2 Positions/3Ports 25 : 2 Positions/5Ports	1 : 1/8 2 : 1/4 3 : 3/8 4 : 1/2	Hand Lever	06 : G1/8 08 : G1/4 10 : G3/8 15 : G1/2

■ **Technical Parameter**

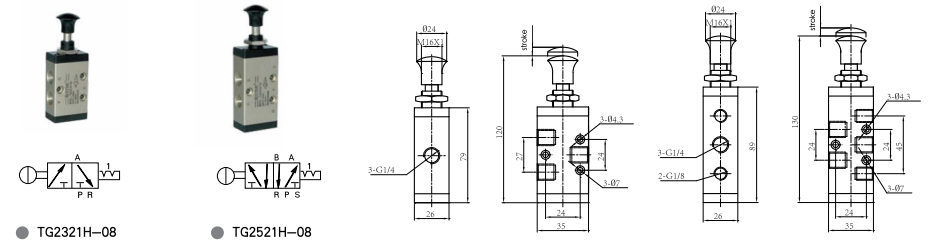
Item Specification	Function	Pipe Size	Nominal Diameter (mm)	Applicable Medium	Applicable Pressure Range	Operating Method	Lubrication	Medium Temperature
TG2310H-06	2 Positions/ 3 Ports	G1/8	3	Air	0 ~ 1.0MPa	Manually Control	Needless	-5 ~ 60°C
TG2311H-06		G1/8	6					
TG2321H-08		G1/4	8					
TG2331H-10		G3/8	10					
TG2341H-15	G1/2	15						
TG2510H-06	2 Positions/ 5 Ports	G1/8	3					
TG2511H-06		G1/8	6					
TG2521H-08		G1/4	8					
TG2531H-10		G3/8	10					
TG2541H-15		G1/2	15					

2 Positions/3 Ports Hand Valve    2 Positions/5 Ports Hand Valve



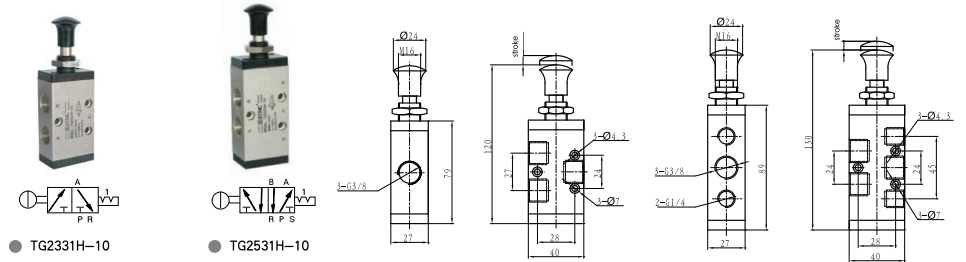
2 Positions/3 Ports Hand Valve    2 Positions/5 Ports Hand Valve

● TG2321H-08    ● TG2521H-08



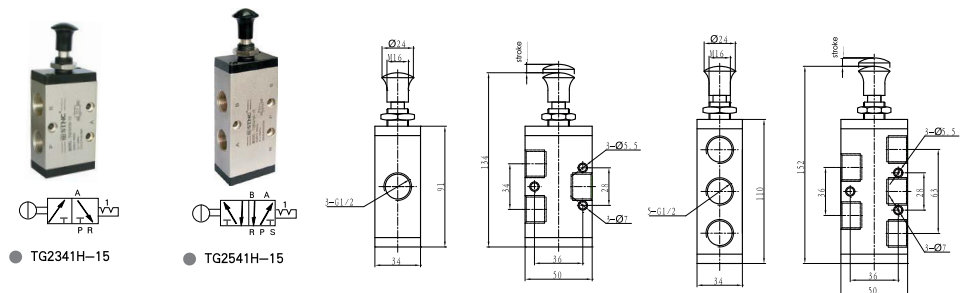
2 Positions/3 Ports Hand Valve    2 Positions/5 Ports Hand Valve

● TG2331H-10    ● TG2531H-10



2 Positions/3 Ports Hand Valve    2 Positions/5 Ports Hand Valve

● TG2341H-15    ● TG2541H-15





### 2 Positions/3 Ports Mechanical Valve



#### Technical Parameter

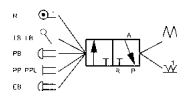
Specification	G321R, PP, PPL, PB, EB, TB, LB
Applicable Medium	Air
Pressure Range	0 ~ 1.0MPa
Control Method	Mechanical Control, Manually Control
Lubrication	Needless
Medium Temperature	-5 ~ 60°C
The Button's Standard Color	black; LB red; PP, PPL, PB, EB, TB
The Button's Color Available	green, black; PP, PPL, PB, TB

#### Ordering Code

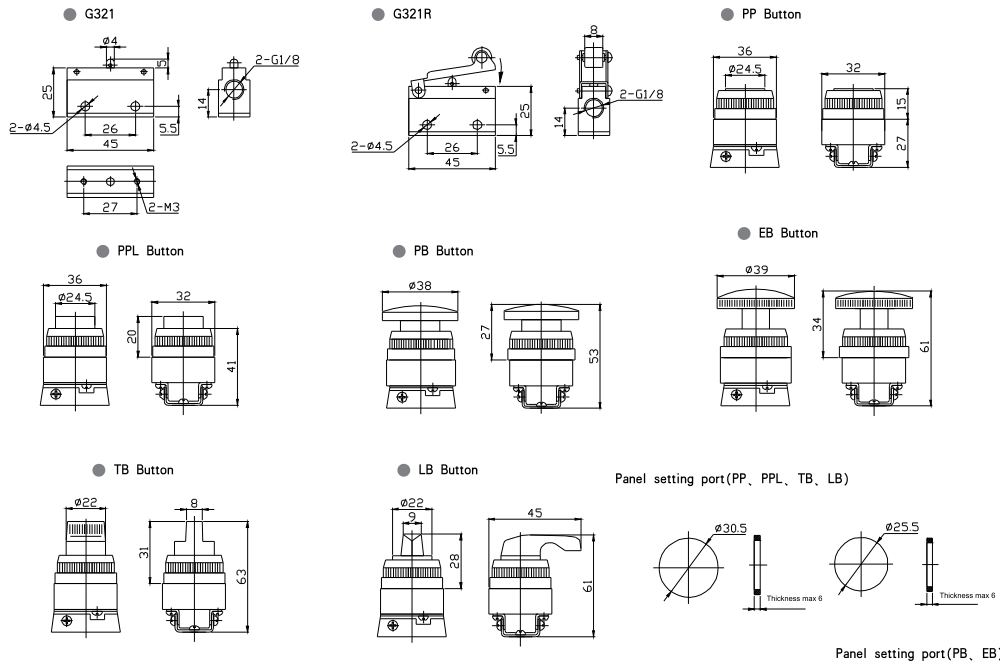


Series: G  
Function: 32; 2 Positions/3Ports  
Pipe size: 1; G1/8  
Push Button Type: R; No Mark; Standard Type  
R: Roller lever  
PP: Palm button  
PPL: Protruding Type  
PB: Palm actuator  
EB: Palm latching actuator  
TB: Turning actuator  
LB: Lever actuator

#### Graphics Sign



#### Figure Dimension



### 2 Positions/3 Ports Mechanical Valve



#### Technical Parameter

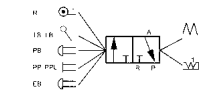
Specification	G322R, PP, PPL, PB, EB, TB, LB
Applicable Medium	Air
Pressure Range	0 ~ 1.0MPa
Control Method	Mechanical Control, Manually Control
Lubrication	Needless
Medium Temperature	-5 ~ 60°C
The Button's Standard Color	black; LB red; PP, PPL, PB, EB, TB
The Button's Color Available	green, black; PP, PPL, PB, TB

#### Ordering Code

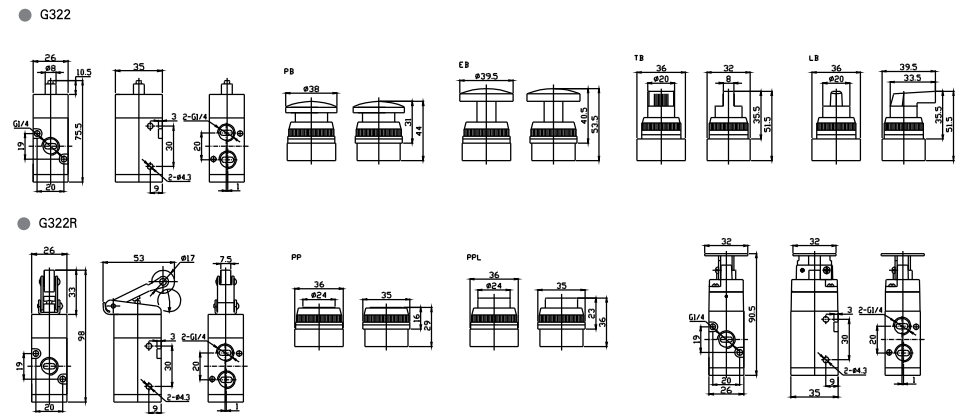


Series: G  
Function: 32; 2 Positions/3 Ports  
Pipe size: 2; G1/4  
Push Button Type: R; No Mark; Standard Type  
R: Roller lever  
PP: Palm button  
PPL: Protruding Type  
PB: Palm actuator  
EB: Palm latching actuator  
TB: Turning actuator  
LB: Lever actuator

#### Graphics Sign



#### Figure Dimension



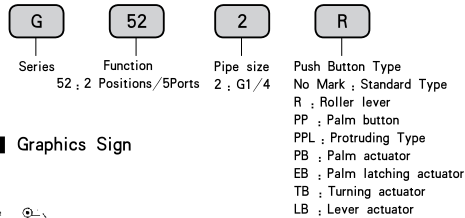
### 2 Positions/5 Ports Mechanical Valve



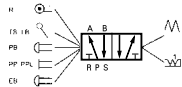
#### Technical Parameter

Specification	G522R, PP, PPL, PB, EB, TB, LB
Applicable Medium	Air
Pressure Range	0 ~ 1.0MPa
Control Method	Mechanical Control, Manually Control
Lubrication	Needless
Medium Temperature	-5 ~ 60°C
The Button's Standard Color	black; LB red; PP, PPL, PB, EB, TB
The Button's Color Available	green, black; PP, PPL, PB, TB

#### Ordering Code

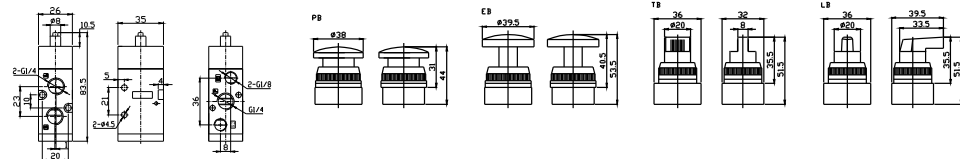


#### Graphics Sign

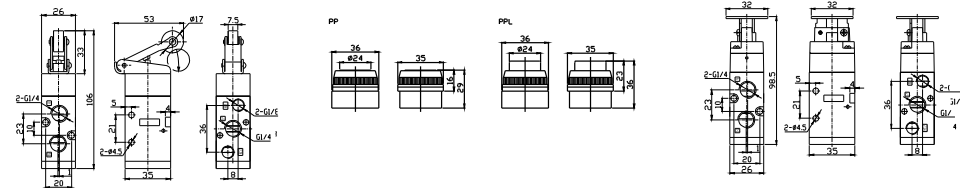


#### Figure Dimension

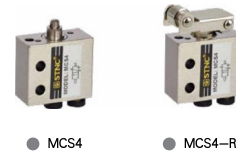
##### G522



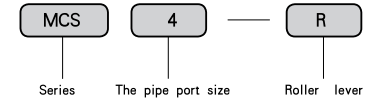
##### G522R



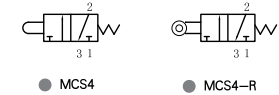
### MCS Mechanical Valve



#### Ordering Code



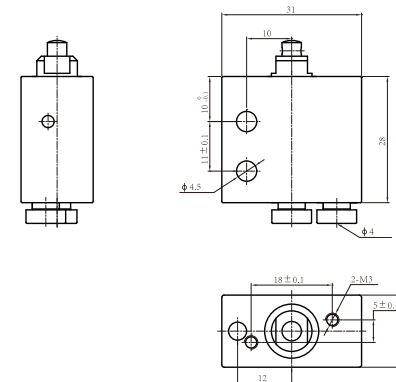
#### Graphics Sign



#### Technical Parameter

Item	Applicable Medium	Applicable Pressure Range	Control Method	Lubrication	Medium Temperature
MCS4	Air	0 ~ 0.8MPa	Manually Control	Needless	-5 ~ 60°C
MCS4-R					

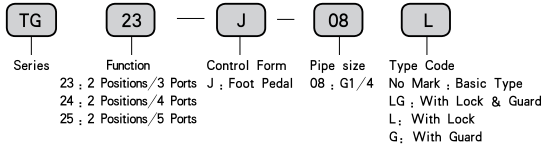
#### Figure Dimension





## 2 Positions/3 Ports, 2 Positions/4 Ports, 2 Positions/5 Ports Foot Valve

### Ordering Code



### Character

It is a foot control valve, widely applied to all kinds of pneumatic system. With small operation force, and emancipation of hands. The R and P ports of two-position & three-port valve can be interchangeable to change the normally close to normally open.

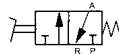
### Technical Parameter

Item Specification	Function	Pipe size	Nominal Diameter (mm)	Applicable Medium	Pressure Range	Operating Method	Lubrication	Medium Temperature
TG23-J-08	2 Positions/3 Ports	G1/4	8	Air	0 ~ 0.8MPa	Foot	Needless	-5 ~ 60°C
TG24-J-08	2 Positions/4 Ports	G1/4	8					
TG25-J-08	2 Positions/5 Ports	G1/4	8					
TG25-J-08L	2 Positions/5 Ports	G1/4	8					
TG25-J-08G	2 Positions/5 Ports	G1/4	8					
TG25-J-08LG	2 Positions/5 Ports	G1/4	8					

### 2 Positions/3 Ports Foot Valve

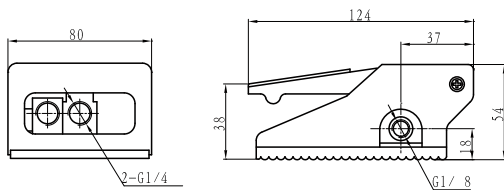


● TG23-J-08



### Figure Dimension

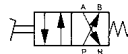
● TG23-J-08



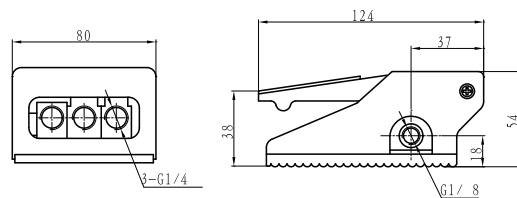
### 2 Positions/4 Ports Foot Valve



● TG24-J-08



● TG24-J-08



## Foot Valve

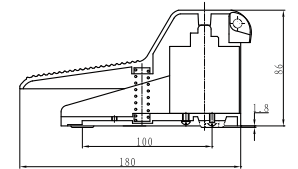
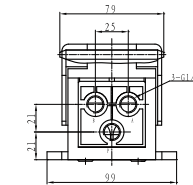
### 2 Positions/5 Ports Foot Valve



● TG25-J-08



● TG25-J-08



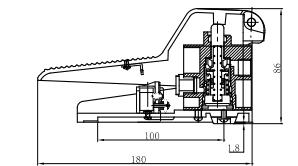
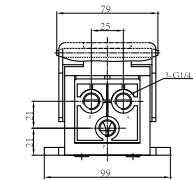
### 2 Positions/5 Ports Foot Valve With Lock



● TG25-J-08L



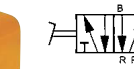
● TG25-J-08L



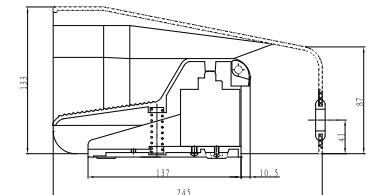
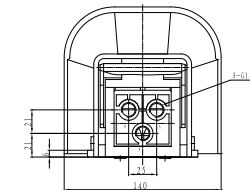
### 2 Positions/5 Ports Foot Valve with Guard



● TG25-J-08G



● TG25-J-08G



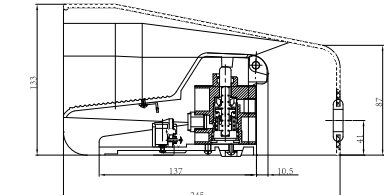
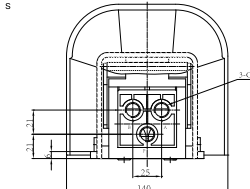
### 2 Positions/5 Ports Foot Valve With Lock & Guard



● TG25-J-08LG



● TG25-J-08LG



### Check Valve



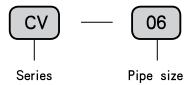
#### Graphics Sign



#### Character

This series of product is a kind of one-way control valve. The medium through this valve can only flow in one-way. It is in reasonable design and simple structure, with handsome shape and wide application.

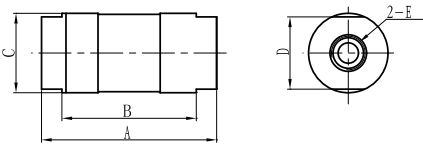
#### Ordering Code



#### Technical Parameter

Specification	Item	Pipe Size	Nominal Diameter (mm)	Applicable Medium	Applicable Pressure Range	Min. Operating Pressure	Medium Temperature
CV-06		G1/8	6	Air	0.05 ~ 1.2 MPa	0.05MPa	-5 ~ 60°C
CV-08		G1/4	8				
CV-10		G3/8	10				
CV-15		G1/2	15				
CV-20		G3/4	20				
CV-25		G1	25				

#### Figure Dimension

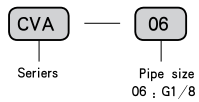


Specification	A	B	C	D	E
CV-06	64	53	φ 28	24	G1/8
CV-08	64	53	φ 28	24	G1/4
CV-10	86	66	φ 39.5	36	G3/8
CV-15	86	66	φ 39.5	36	G1/2
CV-20	112	90	φ 53.5	46	G3/4
CV-25	112	90	φ 53.5	46	G1

### Air Check Valve

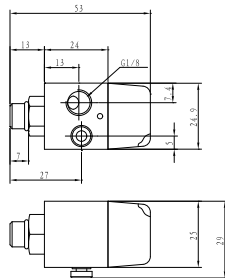


#### Ordering Code



#### Figure Dimension

#### CVA-06



#### Technical Parameter

Specification	Item	Function	Pipe size	Nominal Diameter (mm)	Applicable Medium	Applicable Pressure Range	Lubrication	Medium Temperature
CAV-06		2 Positions/2 Ports	G1/8	4	Compressed Air	0.05 ~ 1MPa	Needless	-5 ~ 60°C

### Shuttle Valve

#### Character

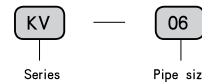
It is similar to the combination of two one-way valves with two input and one output. In the pneumatic system, it acts as "OR" of logic in both executive loop and control loop.



#### Graphics Sign



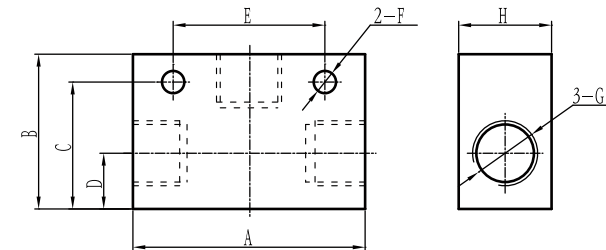
#### Ordering Code



#### Technical Parameter

Specification	Item	Pipe Size	Nominal Diameter (mm)	Applicable Medium	Applicable Pressure Range	Min. Operating Pressure	Medium Temperature
KV-06		G1/8	3	Air	0.05 ~ 1.2 MPa	≥ 0.05MPa	-5 ~ 60°C
KV-08		G1/4	6				
KV-10		G3/8	8				
KV-15		G1/2	10				
KV-20		G3/4	15				
KV-25		G1	20				

#### Figure Dimension



Specification	A	B	C	D	E	F	G	H
KV-06	40	26	21	8	25	φ 4.3	G1/8	16
KV-08	52	35	25	11	35	φ 5.5	G1/4	22
KV-10	70	50	41	18	48	φ 7	G3/8	30
KV-15	75	50	41	18	48	φ 7	G1/2	30
KV-20	110	70	58	22	72	φ 7	G3/4	40
KV-25	110	70	58	22	72	φ 7	G1	40

### Quick Exhaust Valve

#### Character

It is a one-way directional control element and can discharge the compressed air in the system rapidly. It is normally installed between the air cylinder and change valve and makes the air in the cylinder escape directly through this valve, not through change valve. It is applied to the locations where the quick discharge of pneumatic units or equipments are required.



● QV-06

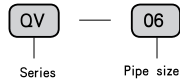


● QV-08



● QV-10

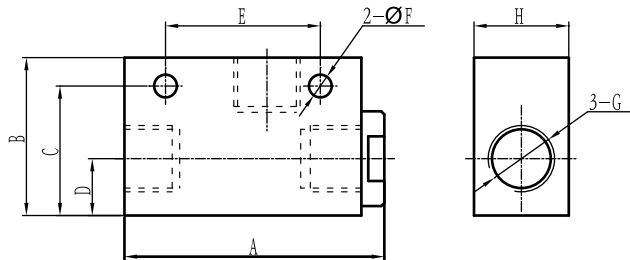
#### Ordering Code



#### Technical Parameter

Item	Pipe Size	Nominal Diameter (mm)	Min. Operating Pressure	Applicable Medium	Pressure Range	Medium Temperature
QV-06	G1/8	6	≥ 0.03 MPa	Air	0.05 ~ 1.2 MPa	-5 ~ 60°C
QV-08	G1/4	8				
QV-10	G3/8	10	≥ 0.04 MPa			
QV-15	G1/2	15				
QV-20	G3/4	20	≥ 0.05 MPa			
QV-25	G1	25				

#### Figure Dimension

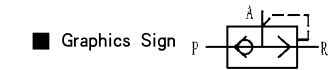


Specification	A	B	C	D	E	F	G	H
QV-06	45	32	27	11	30	φ 4.3	G1/8	22
QV-08	61.5	40	32	16	39	φ 5.5	G1/4	26
QV-10	61.5	40	32	16	39	φ 5.5	G3/8	26
QV-15	99	60	50	20	60	φ 8.5	G1/2	40
QV-20	99	60	50	20	60	φ 8.5	G3/4	40
QV-25	113	75	63	26	80	φ 8.5	G1	50

### Quick Exhaust Valve

#### Character

This series is one-way type of auxiliary components, simple structure, beautiful appearance, easy to use, pneumatic components or device used to quickly exhaust the occasions.



● XQ-M5



● XQ170600

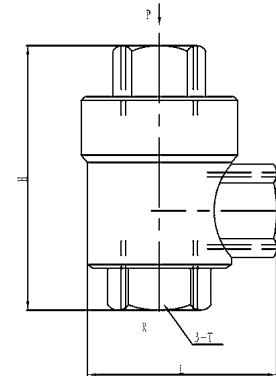


● XQ171500

#### Technical Parameter

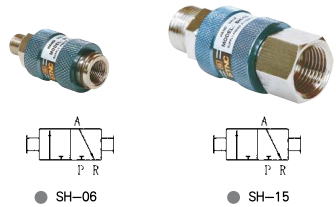
Item	Pipe Size	Nominal Diameter (mm)	Min. Operating Pressure	Durable (Million)	Pressure Range	Switching time
XQ-M5	M5	4	-	≥ 200	0.12 ~ 1.0	≤ 0.03
XQ170600	G1/8	6	≥ 0.3			≤ 0.03
XQ170800	G1/4	6	≥ 0.9			≤ 0.03
XQ171000	G3/8	8	≥ 2.5			≤ 0.04
XQ171500	G1/2	15	≥ 4.5			≤ 0.05

#### Figure Dimension



Specification	XQ-M5	XQ170600	XQ170800	XQ171000	XQ171500
T	M5	G1/8	G1/4	G3/8	G1/2
H	37	39	51	68	77
L	32	32	45	62	86

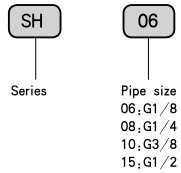
### Hand Slipping Valve



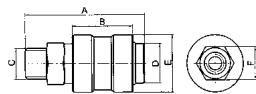
#### Technical Parameter

Item Specification	Pipe size	Nominal Diameter (mm)	Applicable Medium	Pressure Range	Medium Temperature
SH-M5	M5	2.5	Air	0 ~ 1.0MPa	-5 ~ 60°C
SH-06	G1/8	6			
SH-08	G1/4	8			
SH-10	G3/8	10			
SH-15	G1/2	15			

#### Ordering Code



#### Figure Dimension



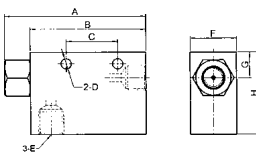
Specification	SH-M5	SH-06	SH-08	SH-10	SH-15
A	38	47	55	57	72
B	20	26	30	30	30
C	M5	G1/8	G1/4	G3/8	G1/2
D	φ 10	φ 14	φ 18	φ 21	φ 21
E	φ 16	φ 21	φ 26	φ 30	φ 30
F	12	15	19	22	24

### Vacuum operating Valve

#### Technical Parameter

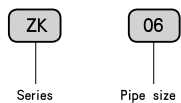
Item Specification	Pipe Size	Nozzle Dia. (mm)	Applicable Medium	Air displacement L/Min	Up-to Vacuum degree -Kpa(-mmHg)	Air Consumption L/min	Applicable pressure -Mpa(Kgf/cm <sup>2</sup> )	Medium Temperature
ZK-06	G1/8	1	Air	27	-91.8(690)	44	0.5(5)	0 ~ 60°C
ZK-08	G1/4	1.5		63	-91.8(690)	100	0.5(5)	
ZK-10	G3/8	2		110	-91.8(690)	180	0.5(5)	

#### Figure Dimension



Specification	ZK-06	ZK-08	ZK-10
A	55	78	105
B	45	63	85
C	20	25	31.5
D	φ 4	φ 4.6	φ 6
E	G1/8	G1/4	G3/8
F	16	20	25
G	10	11	15
H	32	35	40

#### Ordering Code



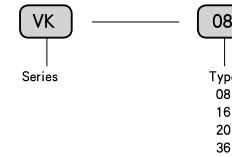
### Oscillator



#### Character

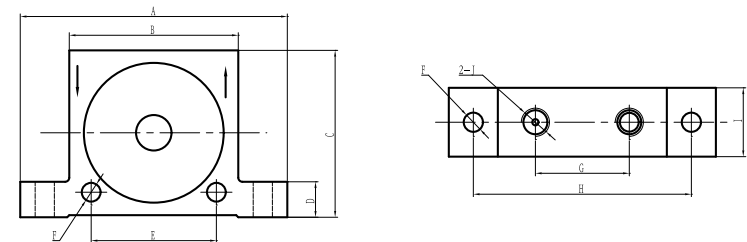
Using compressed air as the power to driven stainless ball. The round of the ball could producing frequency vibrations. So that brings the parts to vibrations. And have the function of mixing. Within a certain range, the frequency could be regulated by the pressure of the air. It could be used in the light manufacturing such as food, drink, medicine etc and also in the machinery industry.

#### Ordering Code



#### Technical Parameter

Type	VK08	VK16	VK20	VK36
Applicable Medium	Filtrate compress Air (Lubrication or No-Lubrication)			
Design	Steel ball rotary acting			
Install Method	Dos shell 2- Φ9 hole			
Note	Pay attention the showout with entrance and exit of pipeline, not reverse installment			



#### Figure Dimension

Type	A	B	C	D	E	F	G	H	I	J
VK-08	86	51	50	12	38.5	φ 6.5	27	68	21	G1/4
VK-16	113	66	65.5	17	50	φ 9	40	90	28	G1/4
VK-20	128	84	80	17	61	φ 9	55	105	38	G1/4
VK-36	161	105	100	21	80	φ 11	72	130	50	G1/4

